

# Vicarage Gardens | Leeds.

## TWO BEDROOM APT | TYPE A.

**Living Room:** 4.2m x 3.5m

**Kitchen:** 2.8m x 3.5m

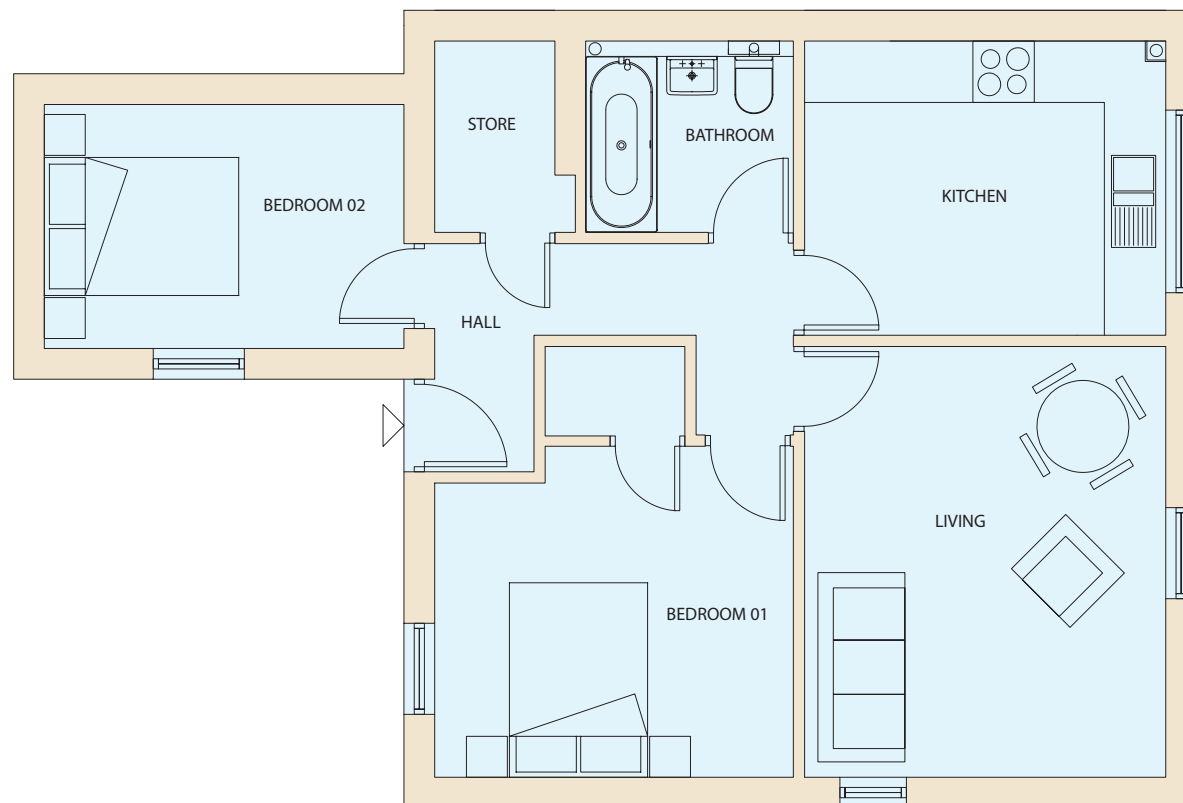
**Bedroom 01:** 3.2m x 3.5m

**Wardrobe:** 1.0m x 1.2m

**Bedroom 02:** 2.3m x 3.5m

**Bathroom:** 1.8m x 2.0m

**Storage:** 1.8m x 1.6m



placefirst

If you're interested in a new home at Vicarage Gardens, please call: 0300 555 5564  
email: vicaragegardens@placefirst.co.uk or visit: [www.placefirst.co.uk](http://www.placefirst.co.uk)

# Vicarage Gardens | Leeds.

## TWO BEDROOM APT | TYPE B.

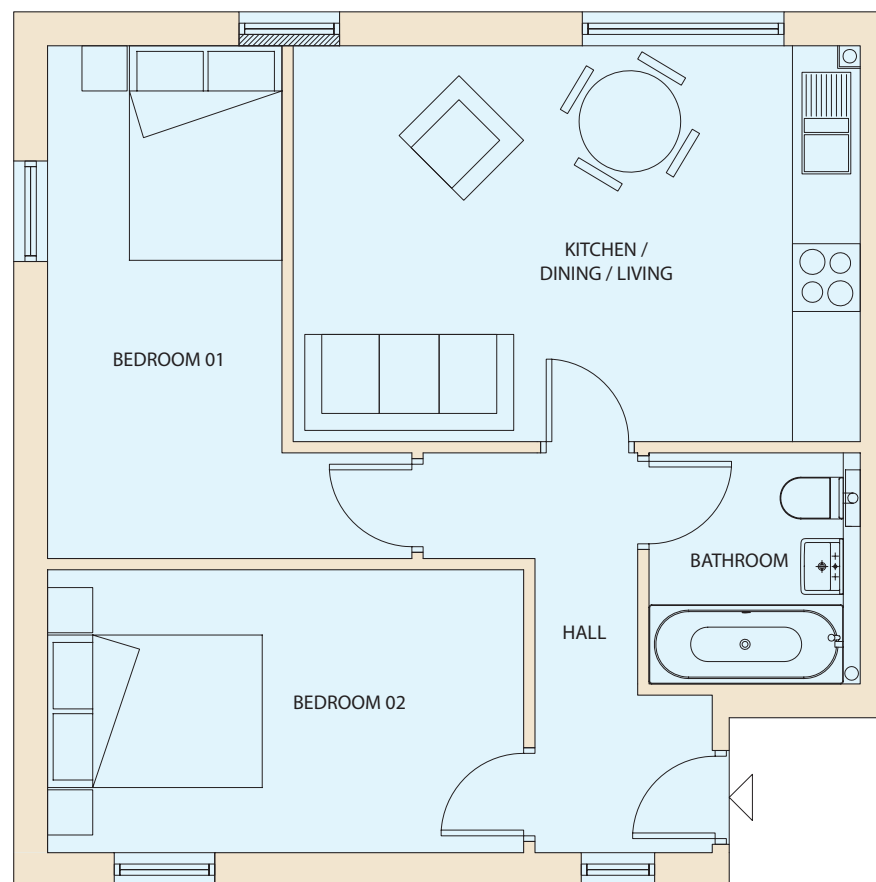
**Kitchen/Living/Dining:** 5.0m x 3.5m

**Bedroom 01:** 4.2m x 2.5m

**Bedroom 02:** 2.0m x 4.5m

**Bathroom:** 1.8m x 2.0m

**Storage:** 1.8m x 1.6m



placefirst

If you're interested in a new home at Vicarage Gardens, please call: 0300 555 5564  
email: vicaragegardens@placefirst.co.uk or visit: [www.placefirst.co.uk](http://www.placefirst.co.uk)