

West End One | Morecambe.

ONE BEDROOM | TYPE A.

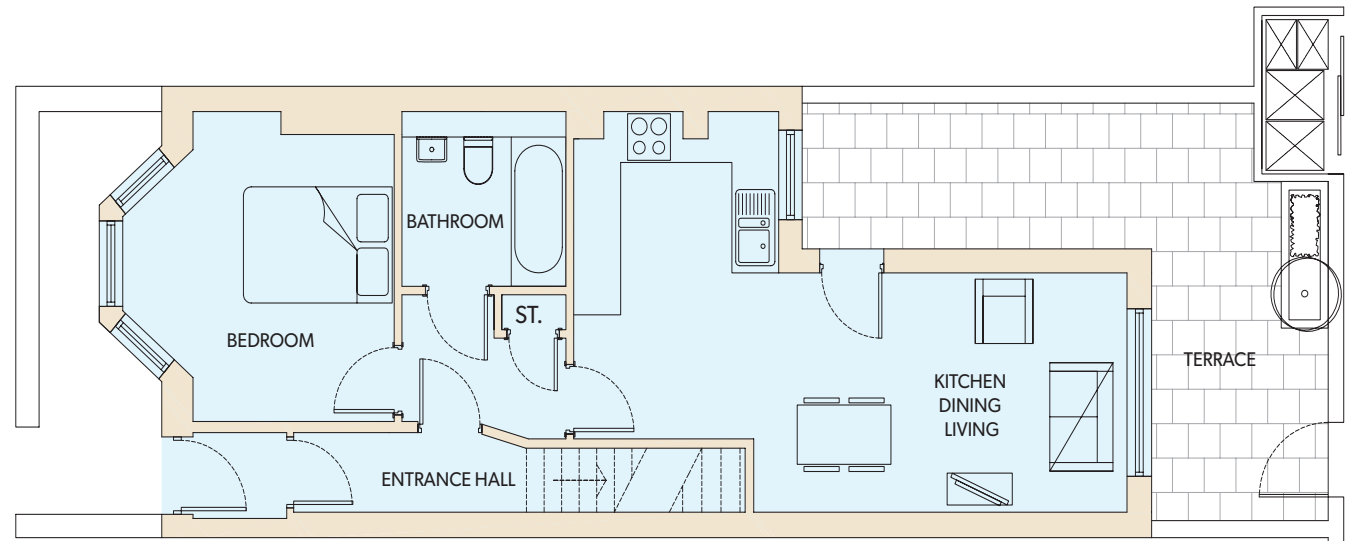
Living/Dining: 4.7m x 2.8m

Kitchen: 2.6m x 3.9m

Bedroom: 3.5m x 3.4m

Bathroom: 2.1m x 2.0m

Terrace: 2.3 - 6.7m x 4.9 - 1.7m



Ground Floor

placefirst

If you're interested in a new home at West End One, please call: 0300 555 5564
email: westendone@placefirst.co.uk or visit: www.placefirst.co.uk

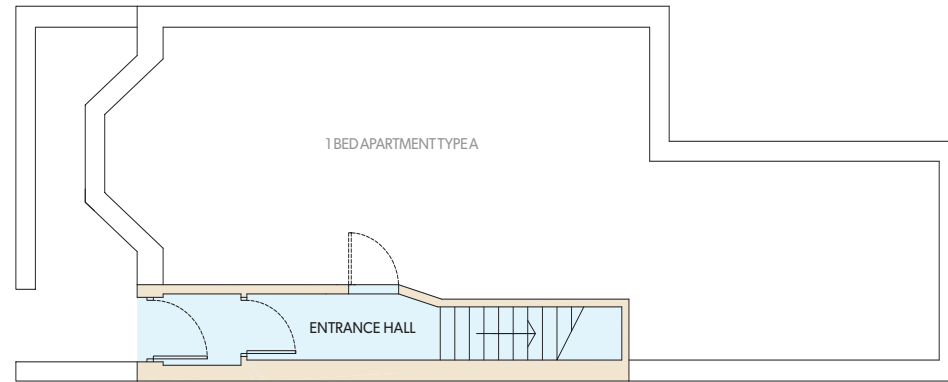
West End One | Morecambe.

ONE BEDROOM | TYPE B.

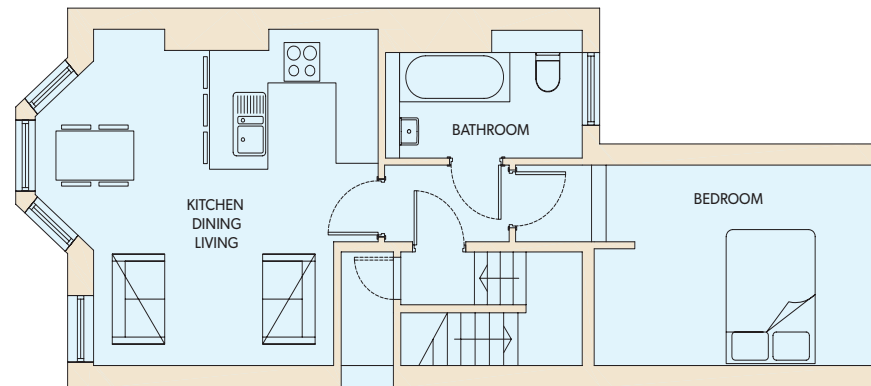
Living/Dining/Kitchen: 5.3m x 4.8m

Bedroom: 4.3m x 2.8m

Bathroom: 3.0m x 1.5m



Ground Floor



First Floor

placefirst

If you're interested in a new home at West End One, please call: 0300 555 5564
email: westendone@placefirst.co.uk or visit: www.placefirst.co.uk

West End One | Morecambe.

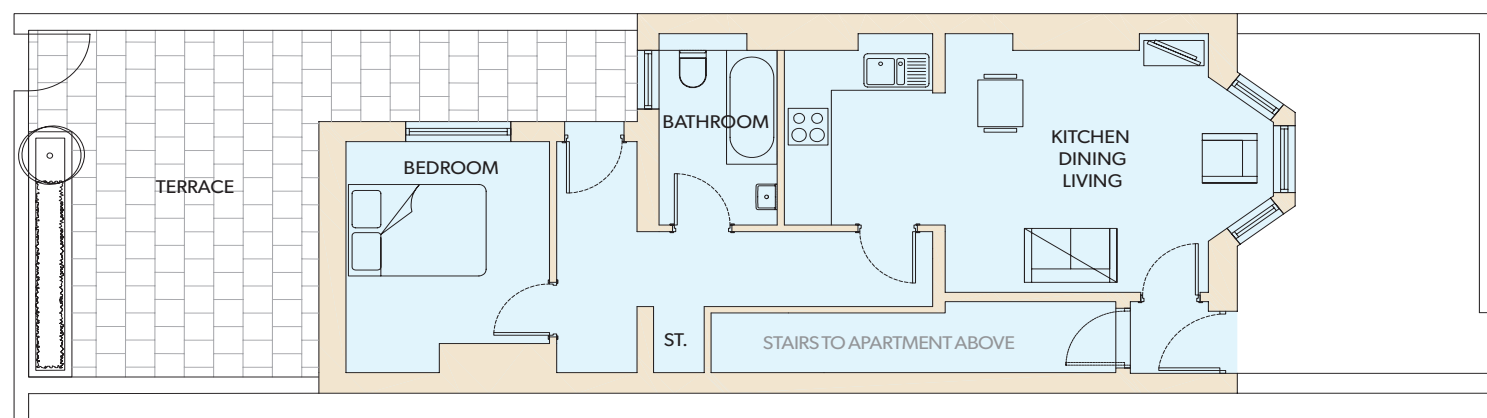
ONE BEDROOM | TYPE C.

Living/Dining/Kitchen: 3.9m x 6.8m

Bedroom: 3.4m x 2.8m

Bathroom: 2.6m x 1.6m

Terrace: 5.2m - 1.4mm x 8.4m - 4.0m



Ground Floor

placefirst

If you're interested in a new home at West End One, please call: 0300 555 5564
email: westendone@placefirst.co.uk or visit: www.placefirst.co.uk

West End One | Morecambe.

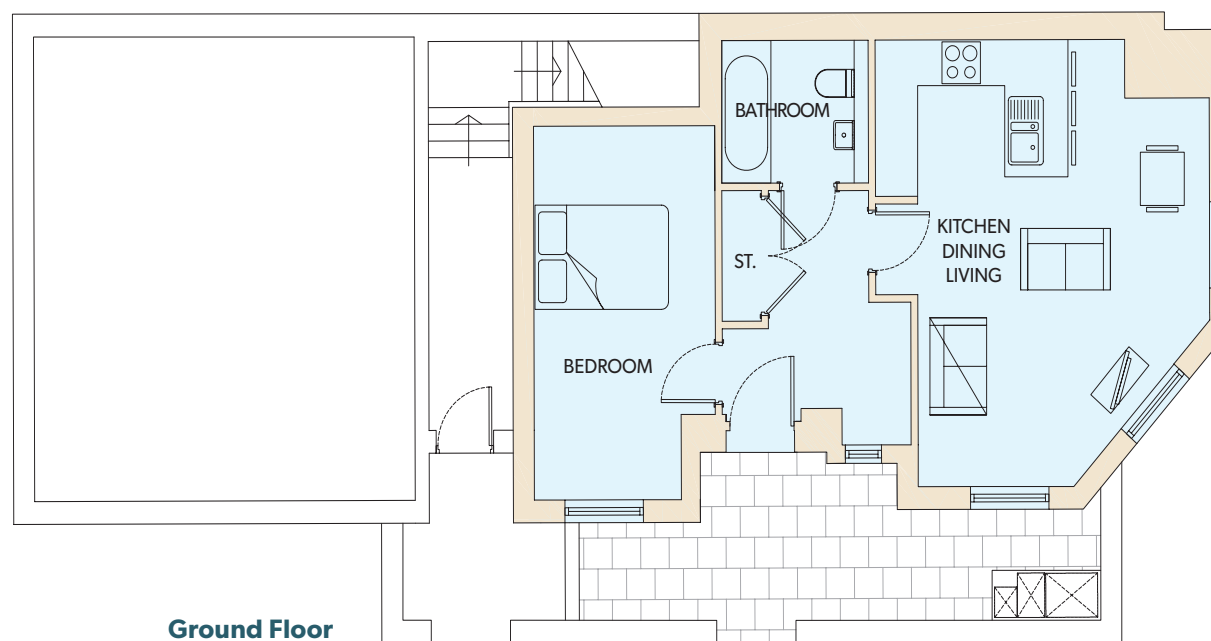
ONE BEDROOM | TYPE D.

Living/Dining/Kitchen: 4.8m - 3.5m x 5.9m

Bedroom: 2.6m x 4.9m

Bathroom: 2.1m x 1.9m

Terrace: 7.5m x 1.5m



placefirst

If you're interested in a new home at West End One, please call: 0300 555 5564
email: westendone@placefirst.co.uk or visit: www.placefirst.co.uk