

Vicarage Gardens | Leeds.

THREE BEDROOM APT | TYPE A.

GROUND FLOOR

Kitchen/Dining: 5.5m x 3.7m

Living Room: 3.3m x 4.1m

Storage: 0.8m x 1.7m

WC: 0.8m x 1.7m

FIRST FLOOR

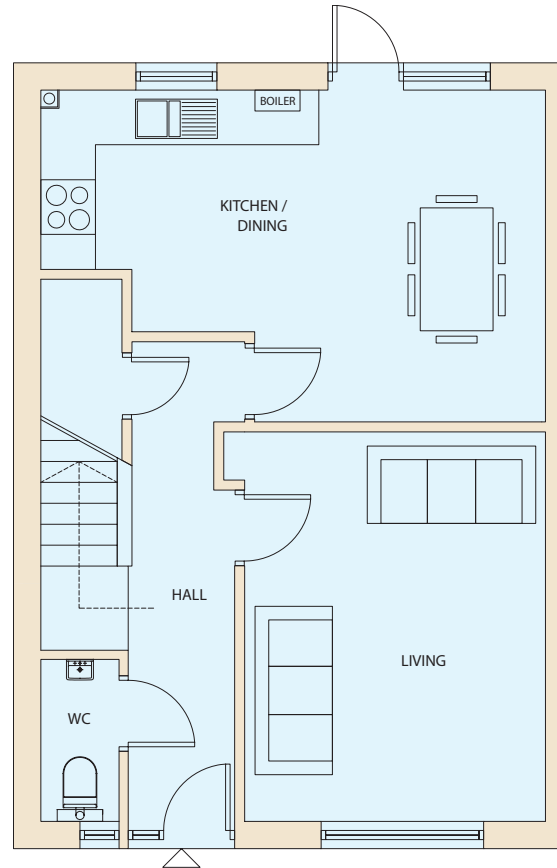
Bedroom 01: 2.6m x 4.1m

Bedroom 02: 3.4m x 3.7m

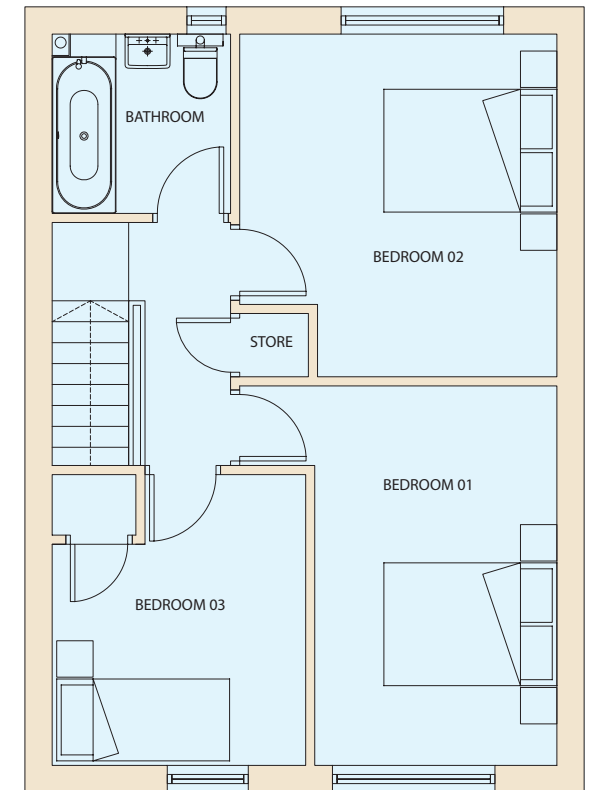
Bedroom 03: 2.7m x 3.1m

Bathroom: 1.9m x 1.9m

Storage: 0.8m x 0.7m



Ground Floor



First Floor

placefirst

If you're interested in a new home at Vicarage Gardens, please call: 0300 555 5564
email: vicaragegardens@placefirst.co.uk or visit: www.placefirst.co.uk

Vicarage Gardens | Leeds.

THREE BEDROOM APT | TYPE B.

GROUND FLOOR

Kitchen/Dining: 5.5m x 2.8m

Living Room: 3.2m x 4.1m

Storage: 0.8m x 1.3m

WC: 0.8m x 1.7m

FIRST FLOOR

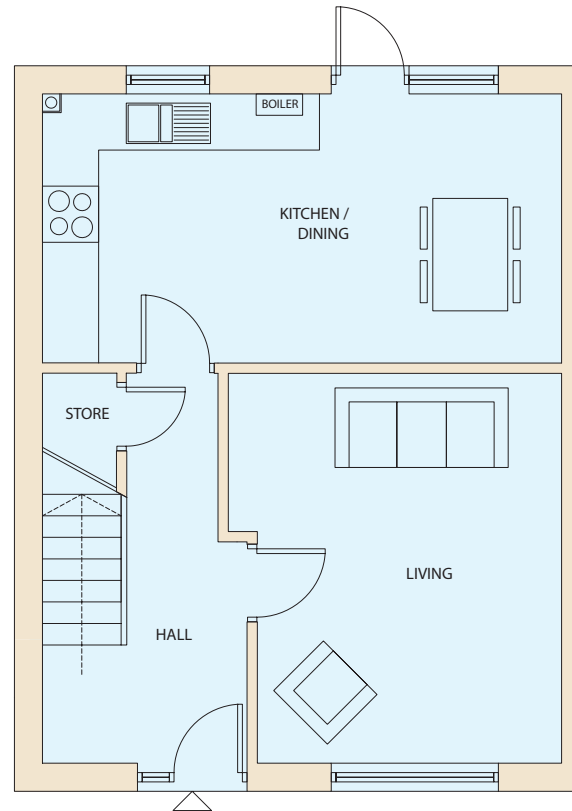
Bedroom 01: 2.6m x 3.2m

Bedroom 02: 2.7m x 3.7m

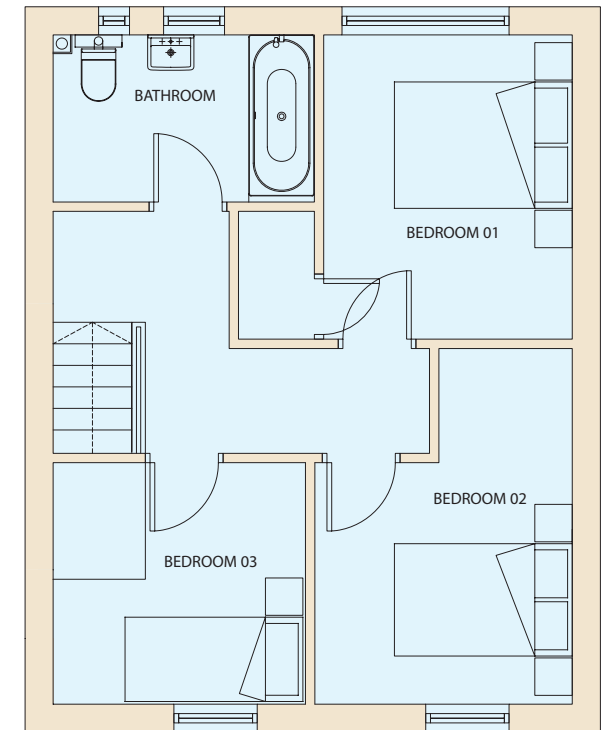
Bedroom 03: 2.7m x 2.6m

Bathroom: 2.7m x 1.7m

Storage: 0.8m x 0.7m



Ground Floor



First Floor

placefirst

If you're interested in a new home at Vicarage Gardens, please call: 0300 555 5564
email: vicaragegardens@placefirst.co.uk or visit: www.placefirst.co.uk