

West End One | Morecambe.

FOUR BEDROOM | TYPE A.

GROUND FLOOR

Living Room: 3.4m x 4.3m

Dining Kitchen: 4.6m x 5.3m

Cloak/W.C: 1.4m x 1.5m

FIRST FLOOR

Bedroom 01: 2.8m x 3.7m

Bedroom 02: 2.8m x 4.3m

Terrace: 4.5m x 1.4m

Bathroom: 1.7m x 2.4m

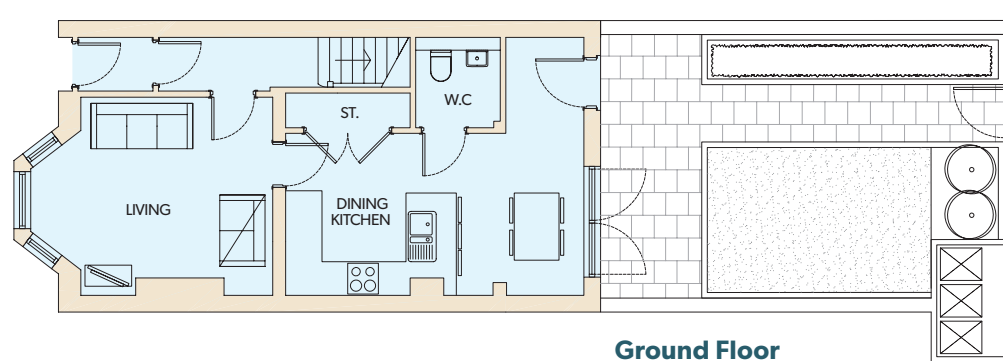
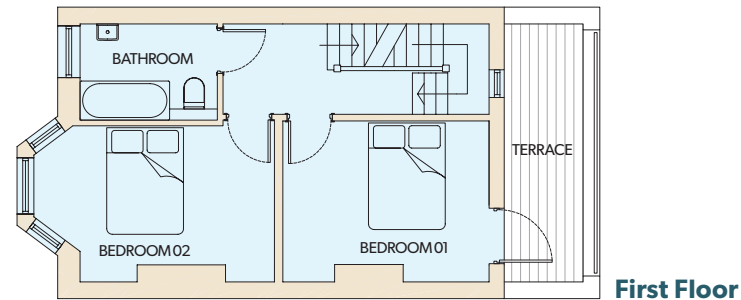
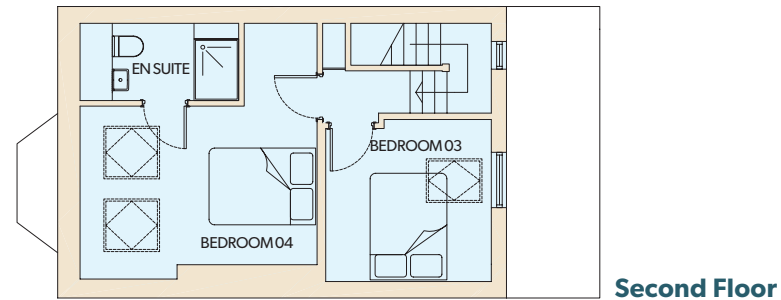
SECOND FLOOR

Bedroom 03: 2.8m x 2.9m

Bedroom 04: 2.8m x 4.2m

En Suite: 1.4m x 2.3m

Garden*: 4.5m x 7.1m



placefirst

If you're interested in a new home at West End One, please call: 0300 555 5564
email: westendone@placefirst.co.uk or visit: www.placefirst.co.uk